

Nightlife puts soul into SolVista

BY CYNDI PALMER
SKY-HI DAILY NEWS

When the sun goes down, the fun doesn't stop at SolVista Basin.

The ski resort, which encompasses five lifts, 406 acres and 1,000 vertical feet, hosts several free night skiing events on its East Mountain throughout the winter. The last one for the ski season is scheduled March 22.

Afterward, or in between ski or snowboard runs, patrons are invited to warm up at the base lodge's outdoor fire ring, and a live band will be heating things up inside.

Entertainment is being provided by an acoustic performance of Todd Adelman and the Love Handles.

The band consists of Bret Billings on pedal steel guitar and dobro, Greg Schochet on Telecaster and mandolin, Paul Smiddy on drums, Ray Smith on bass, and Adelman.

Billings, who came of age musically in the '70s, said Adelman's "songwriting mirrors the country-rock sensibilities that continue to influence my pedal steel playing to this day. It's a good fit and I'm enjoying the opportunity to work with Todd."

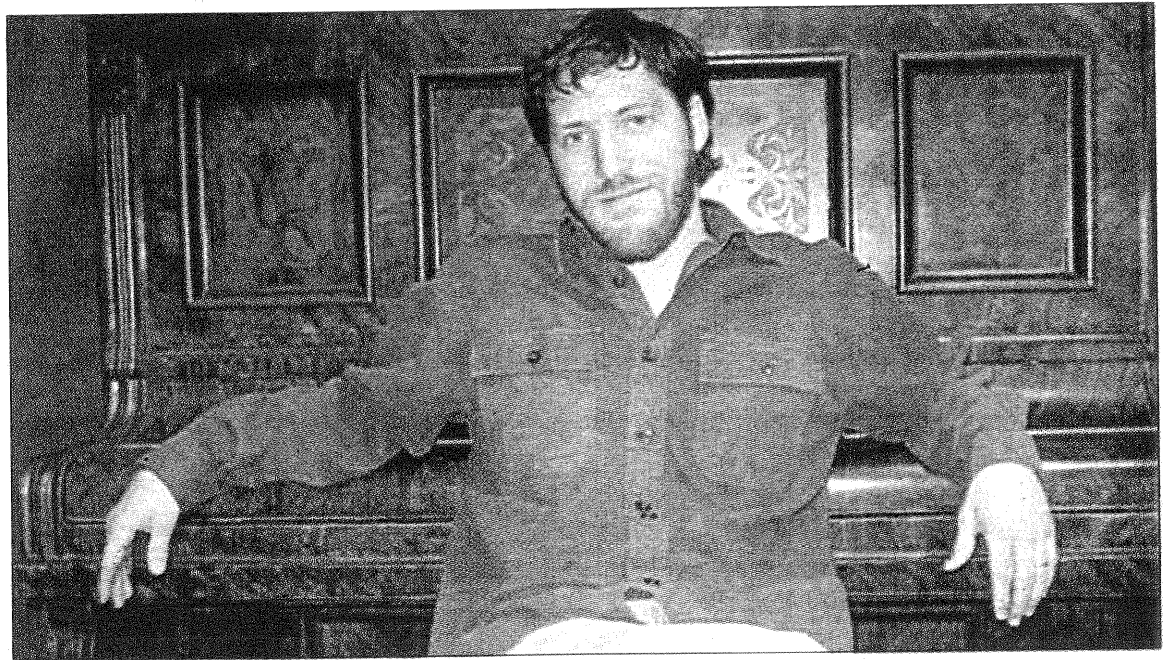
Night skiing, live music
When: 5 to 8 p.m. Saturday
Where: SolVista Basin ski area, Granby
Cost: Free
More information: (970) 887-3384, (888) 283-7458, www.granbyranch.com

Billings, Schochet and Adelman are coming up from the Front Range to put on an acoustic sampling of the band's signature sound, which encompasses what has been described as "from-the-gut roots country/Americana music." Adelman said the "band lives somewhere between The Flying Burrito Brothers and Neil Young's Stray Gators."

He said Billings and Schochet are excellent listeners, "which is not as common of a trait as it should be," and that beyond that, their playing speaks for itself.

"Most importantly they are both great people and a pleasure to play with/be around," he added. "In a band setting that is real important."

Adelman, who also plays a little bit of piano and for the last decade has been primarily a solo/duo performer, is



COURTESY PHOTO

Todd Adelman and The Love Handles are set to get things hopping inside the base lodge during SolVista's last night skiing event.

the lead guitarist and vocalist for the band. He collects vintage Martin and Gibson guitars and admits he loves old guitars "more than I probably should."

Recently, he's been "gigging" with "a fairly recent D18 golden era."

He knew creating music was what he wanted to do with his life long before he was an accomplished musician or the frontman for the Love Handles. He remem-

bers being "blown away" listening to radio station WNEW play an entire side of The Band's "Music From Big Pink" album as he and his mom drove across the George Washington Bridge. He had never heard anything like it and said he "knew from that point on that I needed to play music."

Two primary bands that influenced the formation of the Love Handles: Gram Parsons and The Flying

Burrito Brothers and The Band. His upcoming acoustic performance with Billings and Schochet of The Love Handles will include a handful of tunes that have only made the stage spotlight once before. Audiences are expected to take away a "sense of satisfaction" from the show.

When he's not on the road or on stage, Adelman runs a recording studio in Nederland.